

bsquare | II





Uplift your business's outlook

The perception about your business is as important as where it really stands. bsquare II is designed to create the right image of your business that it deserves.

At times, success needs to be conveyed in proper ways. Having a right address is surely one of them.

bsquare II



GET READY FOR THE QUANTUM LEAP

bsquare II is a modern and futuristic amalgamation of retail as well as corporate spaces. Raising high at an equally iconic location, on the Iscon–Ambali Road in western Ahmedabad, this is a project that is set to redefine elegance in commercial properties.

Let your business jump into the new orbit.

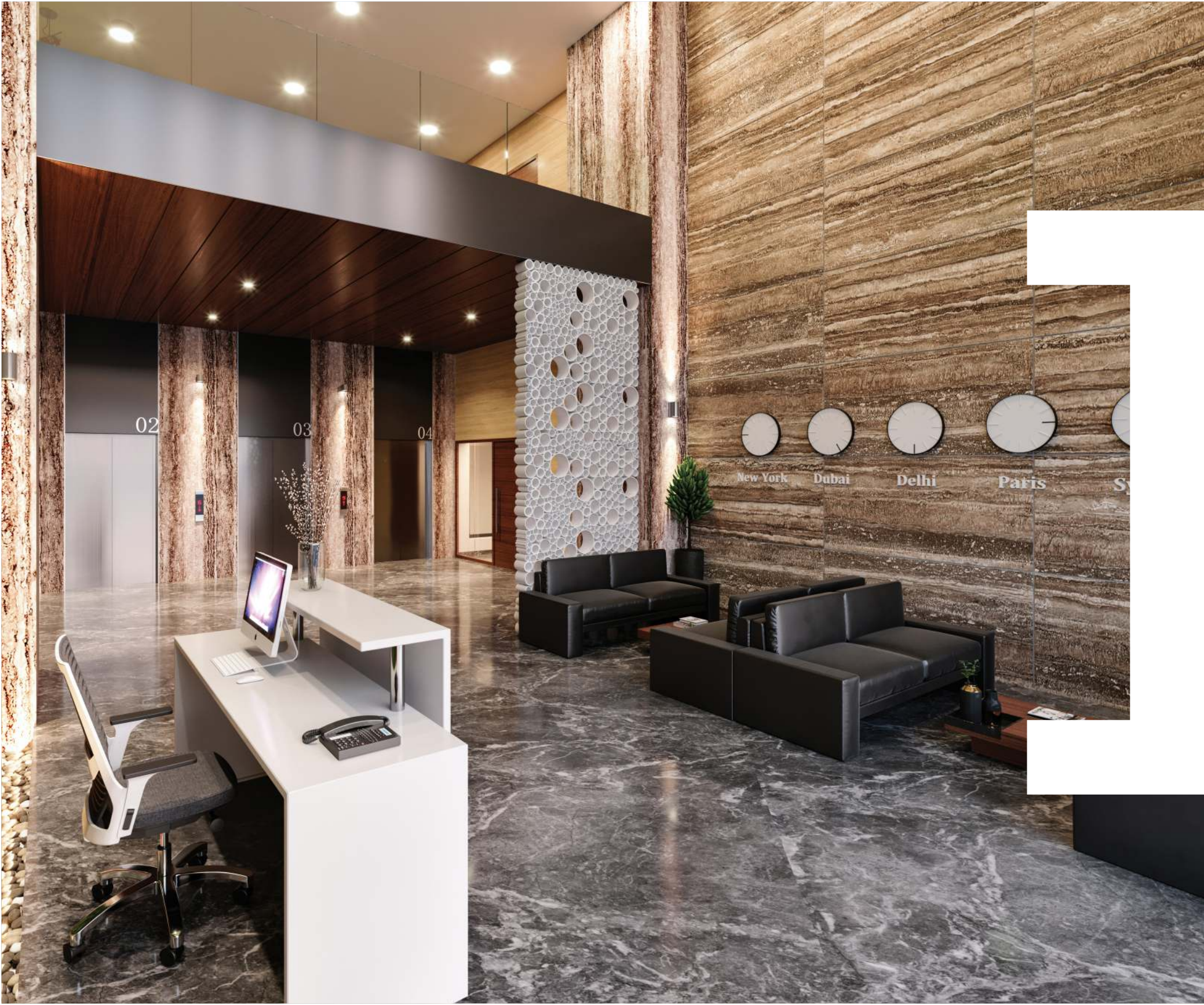
bsquare II



Take the steps that lead upwards

As a new-age business arena, bsquare II is conceived to bring in new thoughts and new approaches to the way businesses are carried out. With its extremely strategic location and premium architecture, the project is well suited to lend sharp upward curves to your business charts.

bsquare II



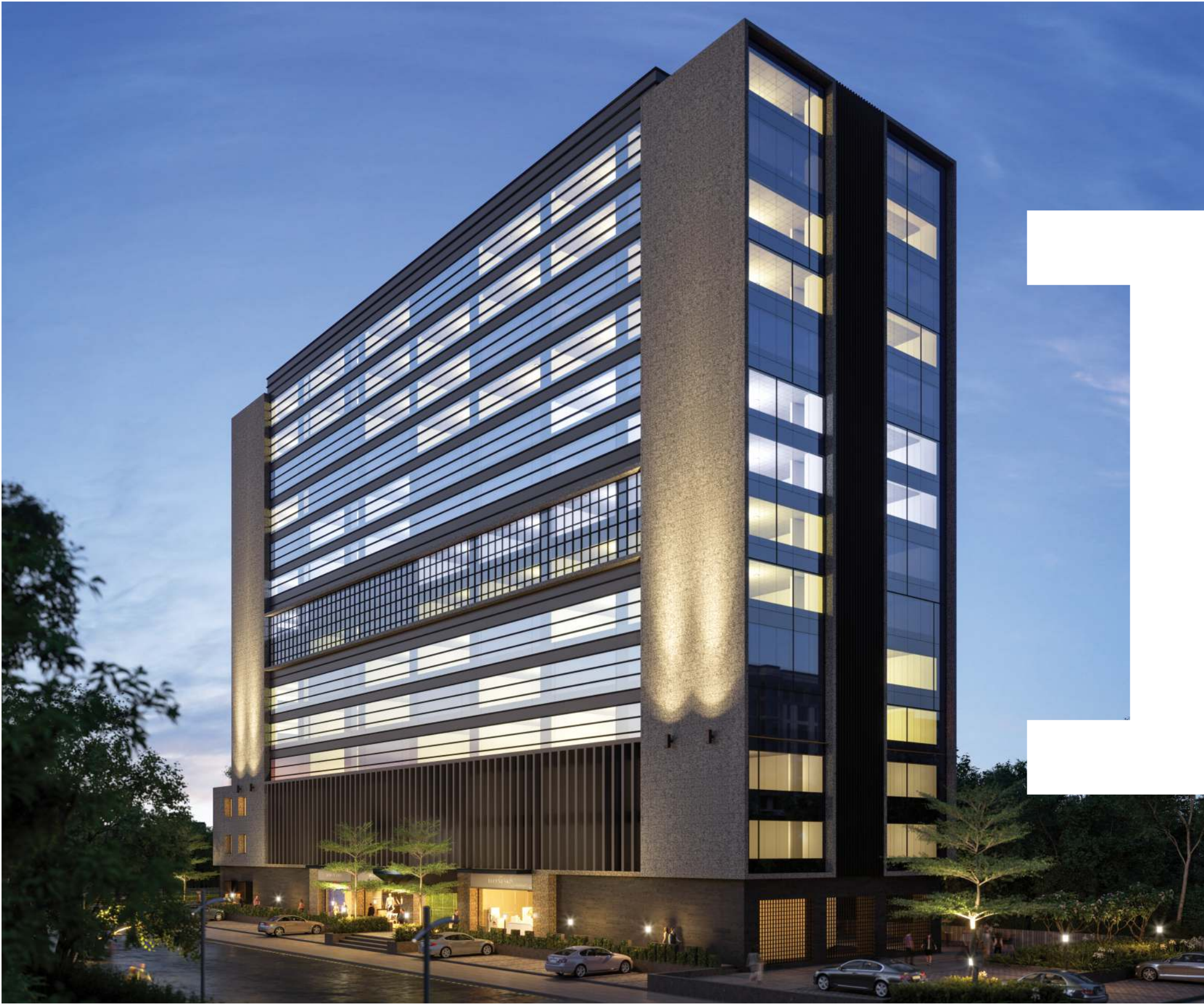
Ground floor



SHOWROOMS

| NO. | SIZE |
|-----|----------------|
| 001 | 17'3" X 69'7" |
| 002 | 17'3" X 69'7" |
| 003 | 17'3" X 84'4" |
| 004 | 26'3" X 24'8" |
| 005 | 26'3" X 26'9" |
| 006 | 34'10" X 19'3" |



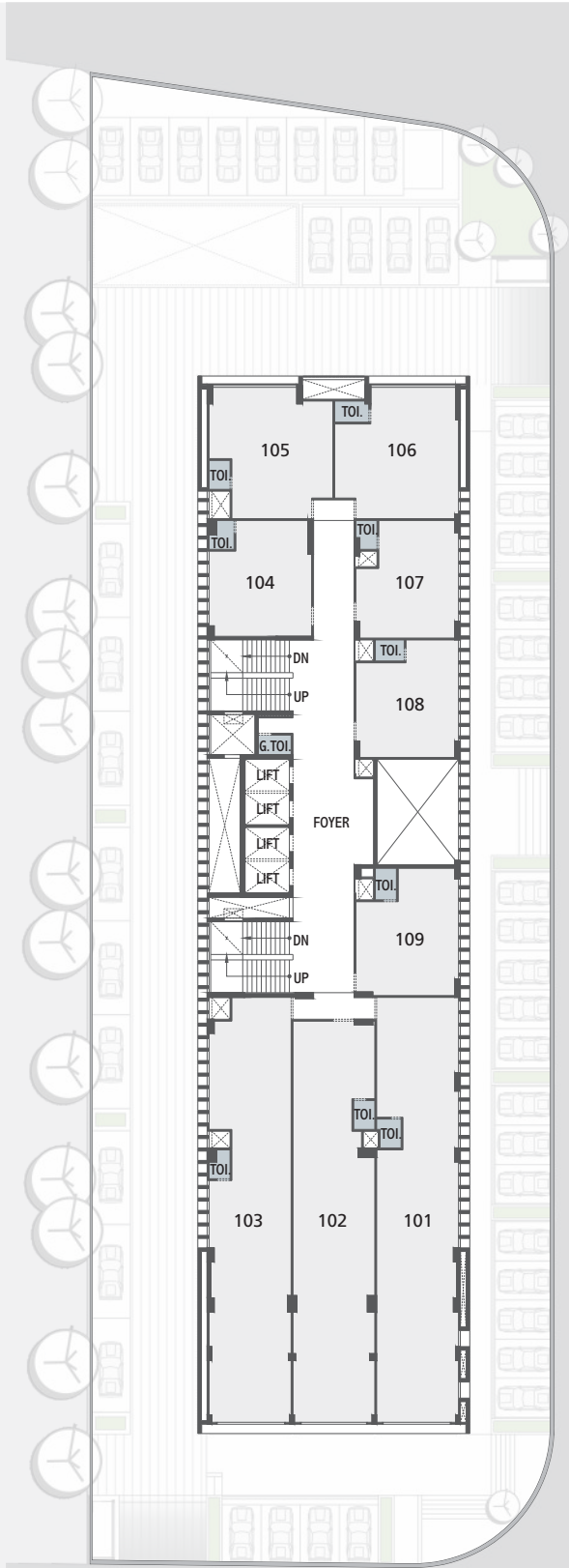


1st floor



OFFICES

| NO. | SIZE |
|-----|---------------|
| 101 | 17'3" X 89'4" |
| 102 | 17'3" X 84'4" |
| 103 | 17'3" X 89'4" |
| 104 | 21'7" X 24'4" |
| 105 | 26'1" X 27'7" |
| 106 | 26'1" X 27'7" |
| 107 | 21'7" X 24'8" |
| 108 | 21'7" X 24'8" |
| 109 | 21'7" X 26'9" |





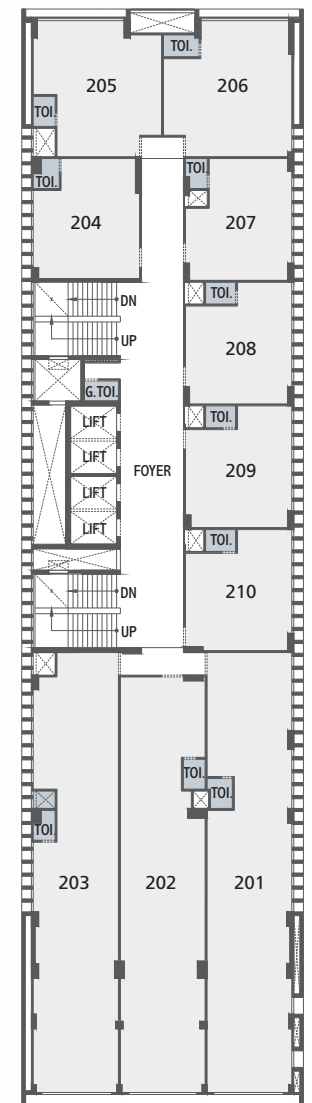
N^o floor

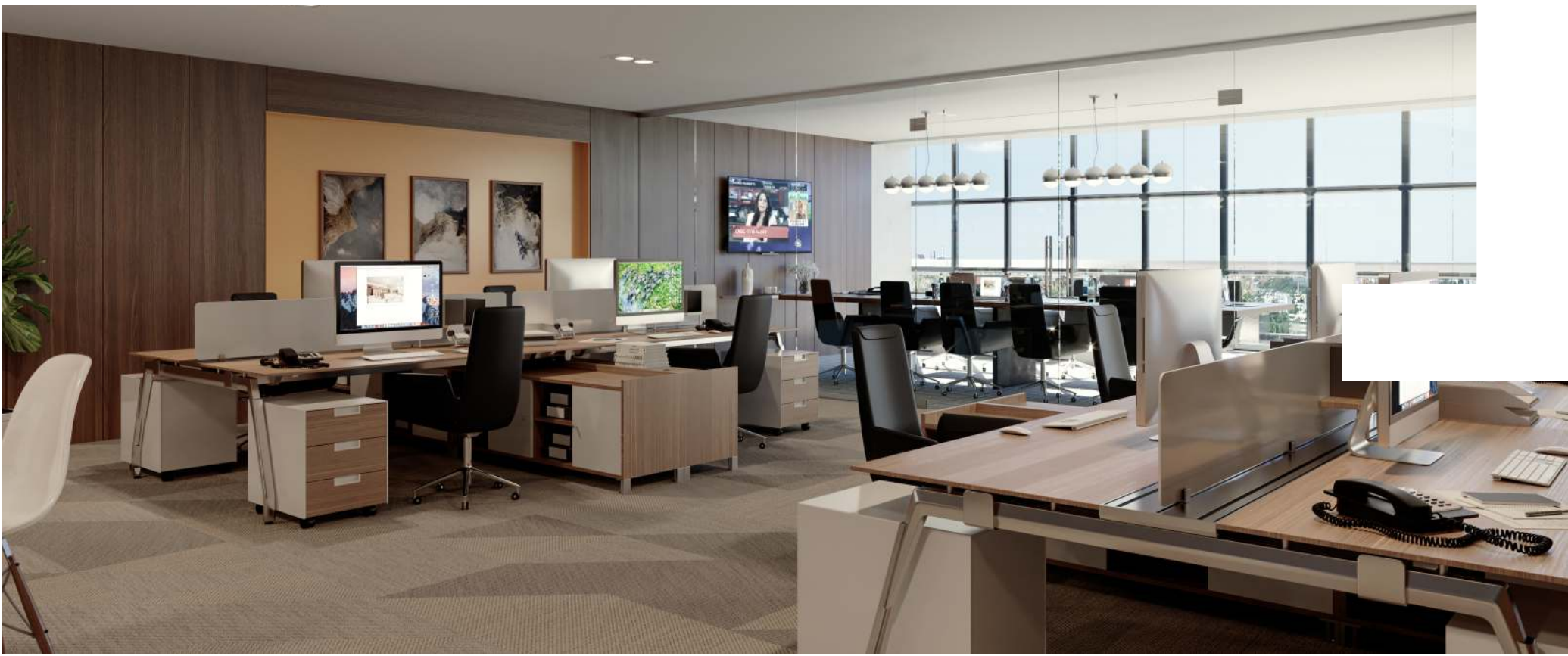

SHOWROOMS

| NO. | SIZE |
|-----|---------------|
| 201 | 17'3" X 89'4" |
| 202 | 17'3" X 84'4" |
| 203 | 17'3" X 89'4" |

OFFICES

| NO. | SIZE |
|-----|---------------|
| 204 | 21'7" X 24'4" |
| 205 | 26'1" X 27'7" |
| 206 | 26'1" X 27'7" |
| 207 | 21'7" X 24'8" |
| 208 | 21'7" X 24'8" |
| 209 | 21'7" X 24'8" |
| 210 | 21'7" X 24'6" |



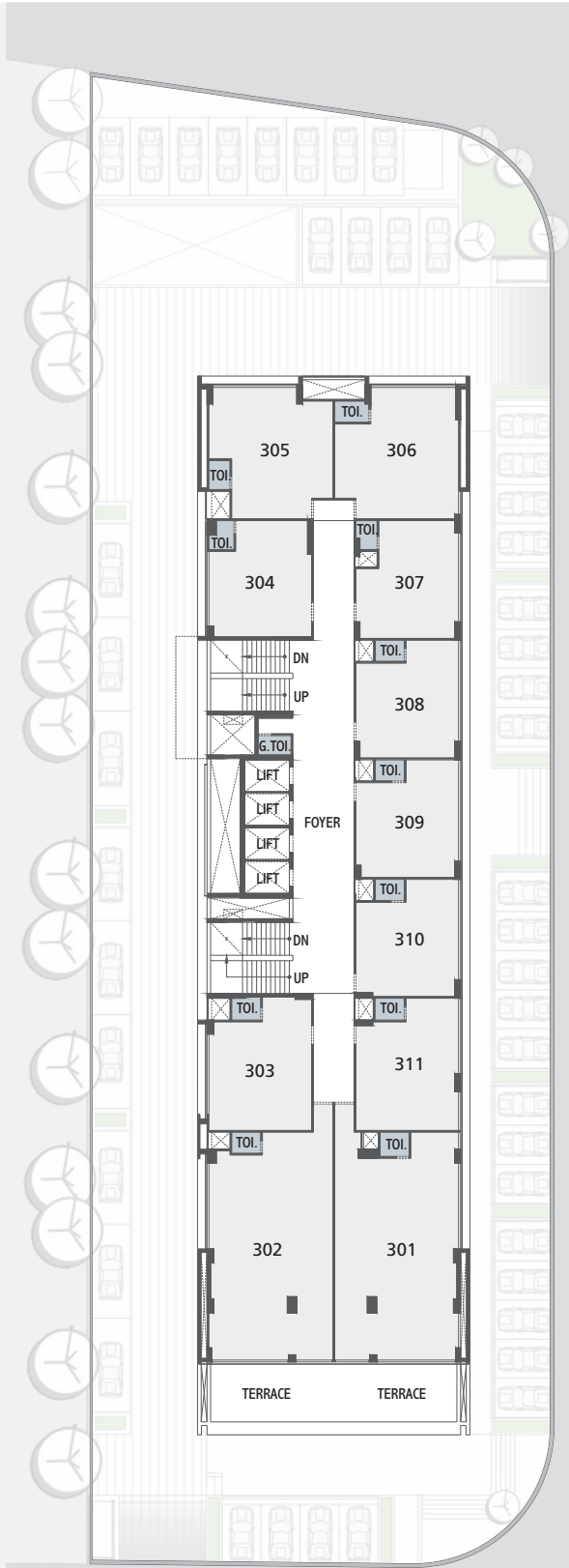


3rd floor



OFFICES

| NO. | SIZE |
|-----|----------------|
| 301 | 26'1" X 47'10" |
| 302 | 26'1" X 47'10" |
| 303 | 21'7" X 28'0" |
| 304 | 21'7" X 24'4" |
| 305 | 26'1" X 27'7" |
| 306 | 26'1" X 27'7" |
| 307 | 21'7" X 24'8" |
| 308 | 21'7" X 24'8" |
| 309 | 21'7" X 24'8" |
| 310 | 21'7" X 24'6" |
| 311 | 21'7" X 27'9" |



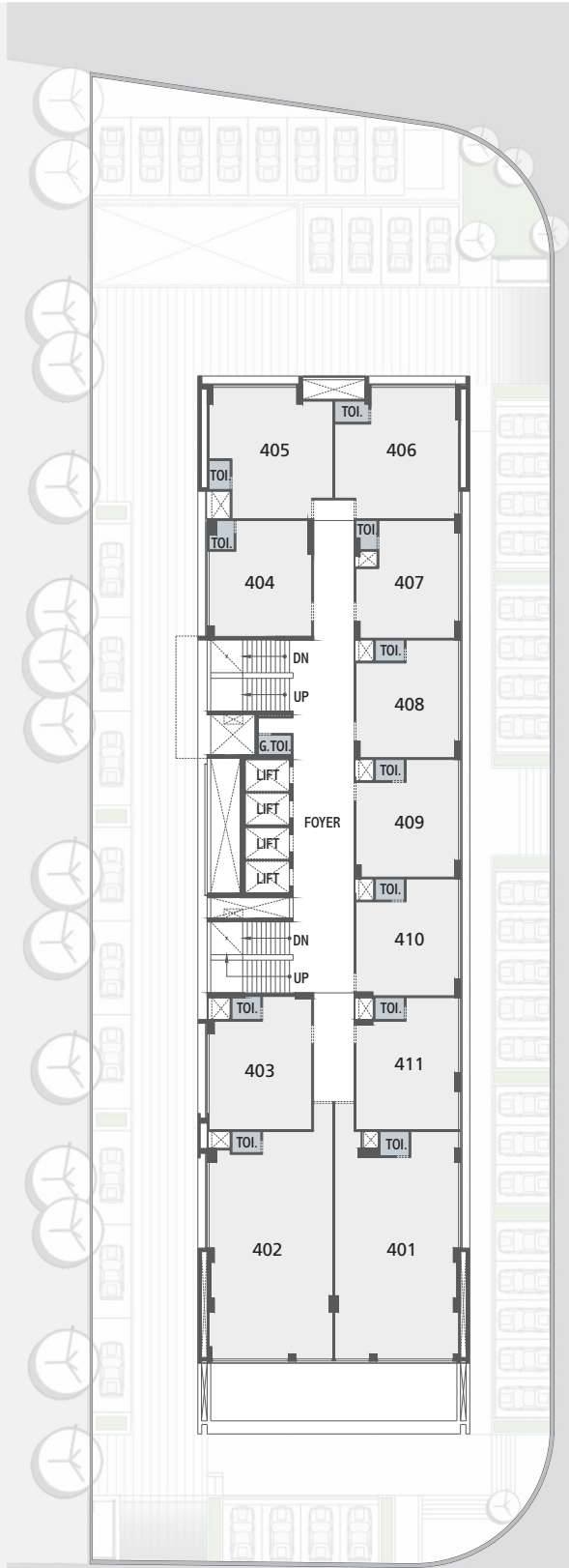


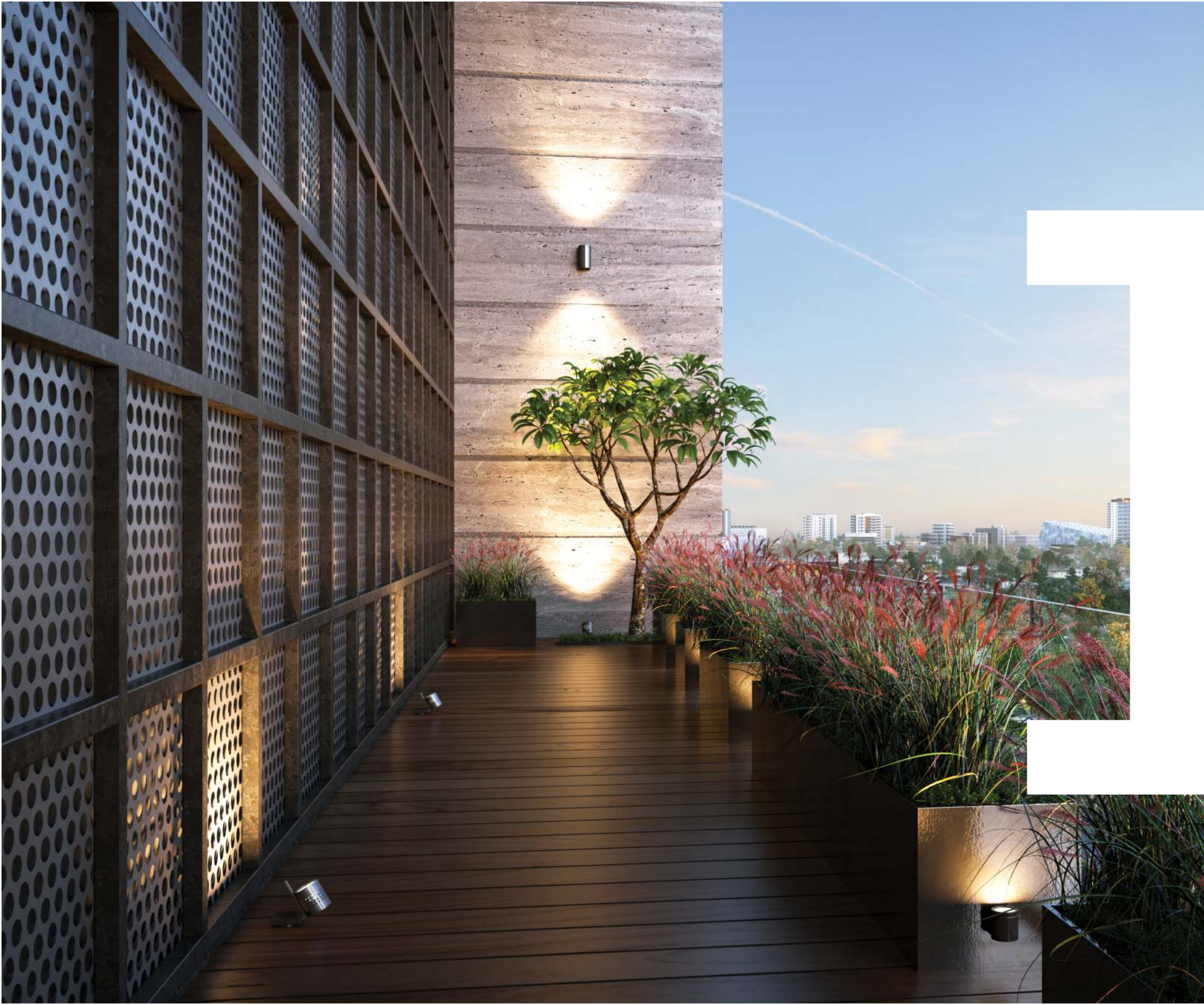
4th - 5th FLOOR



OFFICES

| NO. | SIZE |
|-----|----------------|
| 401 | 26'1" X 47'10" |
| 402 | 26'1" X 47'10" |
| 403 | 21'7" X 28'0" |
| 404 | 21'7" X 24'4" |
| 405 | 26'1" X 27'7" |
| 406 | 26'1" X 27'7" |
| 407 | 21'7" X 24'8" |
| 408 | 21'7" X 24'8" |
| 409 | 21'7" X 24'8" |
| 410 | 21'7" X 24'6" |
| 411 | 21'7" X 27'9" |



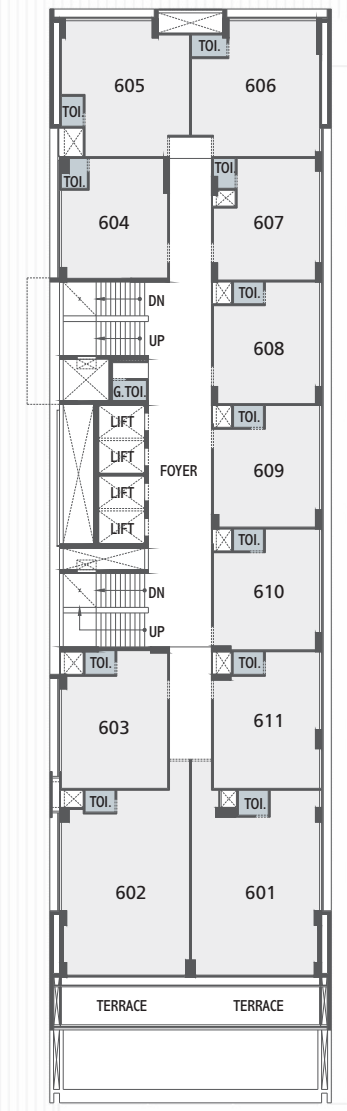


6TH & 11TH FLOOR



OFFICES

| NO. | SIZE |
|-----|---------------|
| 601 | 26'1" X 37'7" |
| 602 | 26'1" X 37'7" |
| 603 | 21'7" X 28'0" |
| 604 | 21'7" X 24'4" |
| 605 | 26'1" X 27'7" |
| 606 | 26'1" X 27'7" |
| 607 | 21'7" X 24'8" |
| 608 | 21'7" X 24'8" |
| 609 | 21'7" X 24'8" |
| 610 | 21'7" X 24'6" |
| 611 | 21'7" X 27'9" |



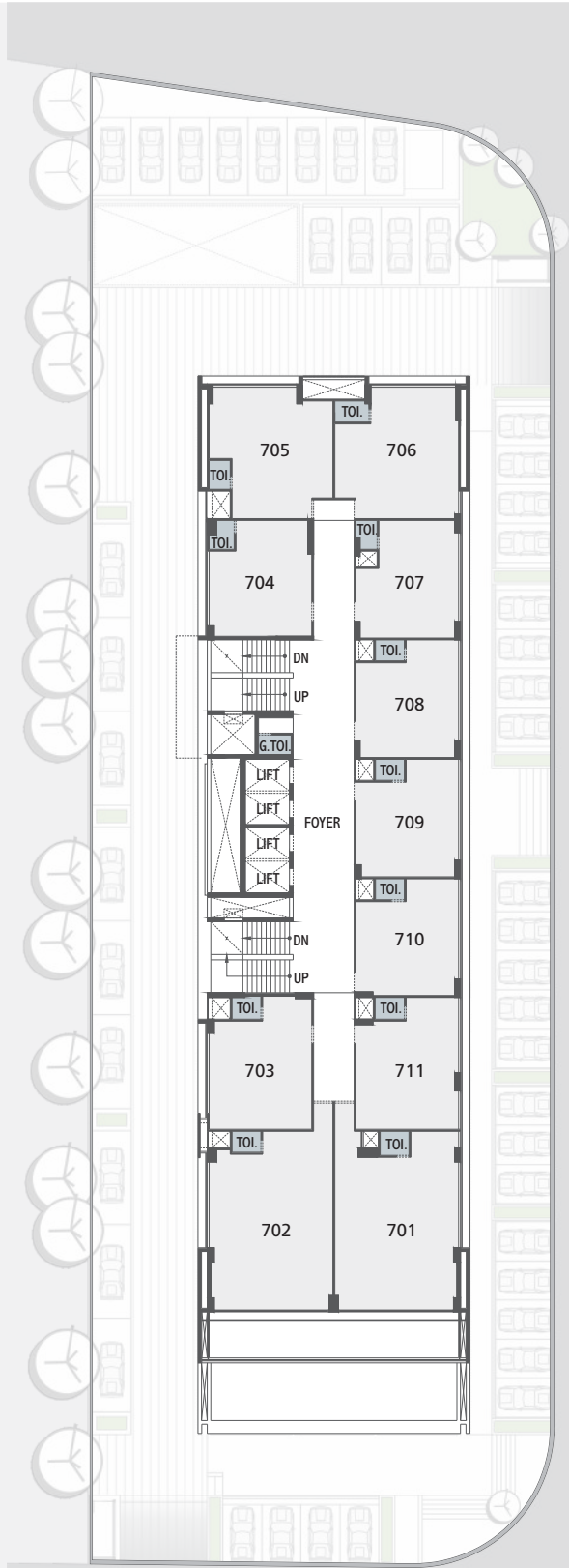


7th, 12th & 13th floor



OFFICES
NO. SIZE

| | |
|-----|---------------|
| 701 | 26'1" X 37'7" |
| 702 | 26'1" X 37'7" |
| 703 | 21'7" X 28'0" |
| 704 | 21'7" X 24'4" |
| 705 | 26'1" X 27'7" |
| 706 | 26'1" X 27'7" |
| 707 | 21'7" X 24'8" |
| 708 | 21'7" X 24'8" |
| 709 | 21'7" X 24'8" |
| 710 | 21'7" X 24'6" |
| 711 | 21'7" X 27'9" |



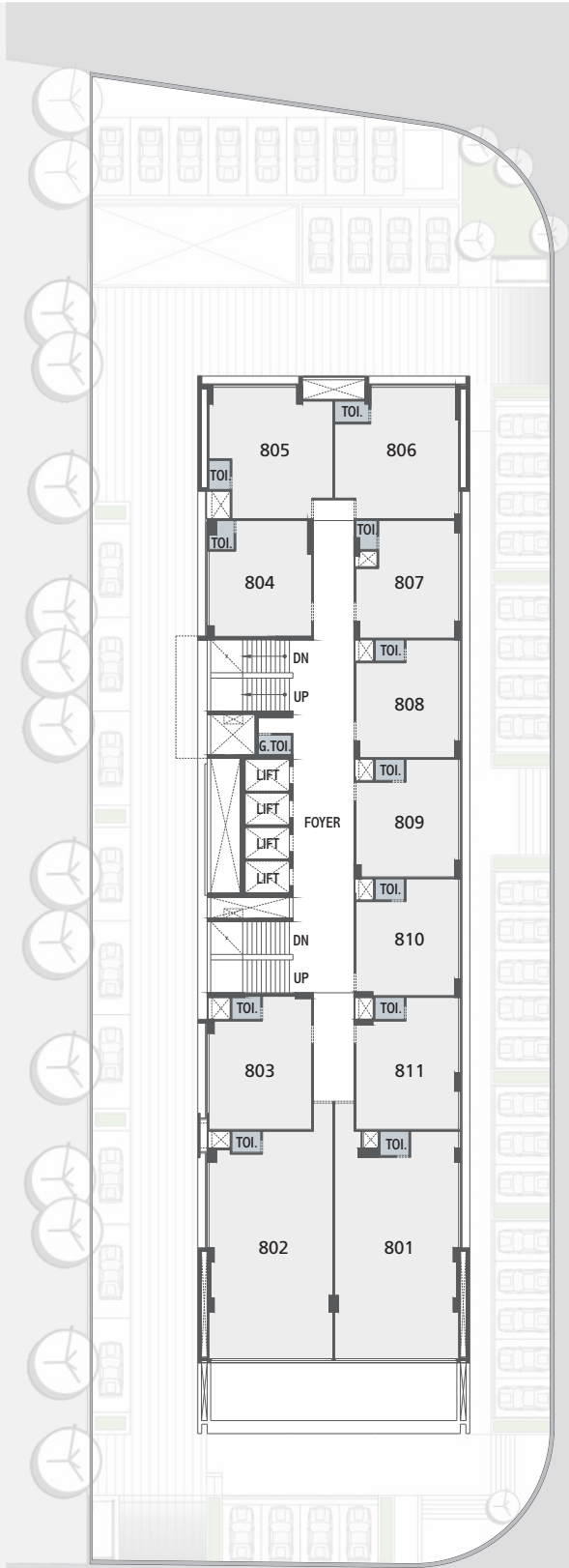


8th, 9th & 10th floor



OFFICES

| NO. | SIZE |
|-----|----------------|
| 801 | 26'1" X 47'10" |
| 802 | 26'1" X 47'10" |
| 803 | 21'7" X 28'0" |
| 804 | 21'7" X 24'4" |
| 805 | 26'1" X 27'7" |
| 806 | 26'1" X 27'7" |
| 807 | 21'7" X 24'8" |
| 808 | 21'7" X 24'8" |
| 809 | 21'7" X 24'8" |
| 810 | 21'7" X 24'6" |
| 811 | 21'7" X 27'9" |





SPECIFICATIONS

STRUCTURE

- Earthquake resistant safe & sound RCC frame structure as per IS : 1893 & 4326.

WINDOWS

- Fully glazed anodized aluminum windows.

FLOORING

- Vitrified tiles in flooring.
- Stone flooring in staircase.
- Stone flooring in corridors & passages.
- China mosaic with water proofing treatment on terrace.

TOILET/PLUMBING

- Vitrified tiles in flooring. Concealed plumbing with superior quality sanitary ware.

ELECTRICAL

- 3 phase 5 KVA load.

DOORS

- Internal doors - flush door. Superior quality C.P. or S.S. finish hardware fittings.

PAINTS

- Inside - Putty finish on all walls.
- External – Texture plaster coated with acrylic paint.

ELEVATORS

- Premium quality high speed elevator with automatic door.

WATER PROOFING

- Waterproofing in all toilets & terrace area to prevent seepage.

FEATURES

- Elegantly designed entrance foyer with reception.
- Lush green environment with beautiful landscape.
- Ground floor and 2 level basement parking.
- Private allotted parking space.
- 24x7 security with CCTV surveillance.
- Access control system.
- High quality elevators of standard company.
- Fire safety.
- Anti termite pest control system.
- 24 hours water supply.

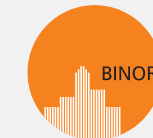


Bsquare | II

Nr. Neptune House
Ambli Road, Ahmedabad.



Developer



BINORI INFRAVENTURE

+91 98257 93657

+91 79 2970 4119

Architect

APURVA AMIN

www.binori.in